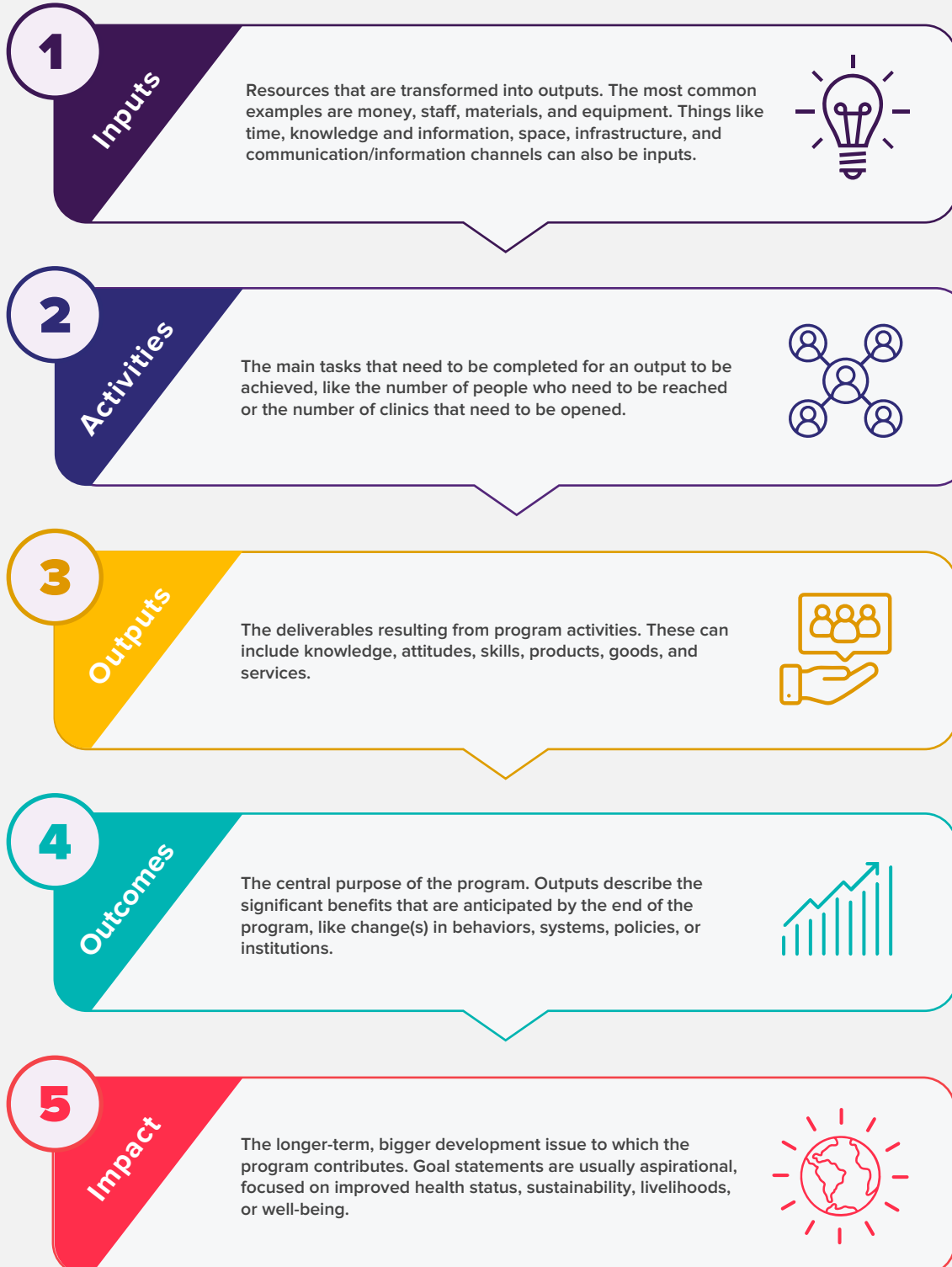


# Logic Model

## Values (optional):

The core ethics or principles of the organization. When included, values can show how an organization's aspirations relate to program implementation.



**databoom**

### SOURCES:

[https://usaidlearninglab.org/sites/default/files/resource/files/project\\_logic\\_model\\_how\\_to\\_note\\_final\\_sep1.pdf](https://usaidlearninglab.org/sites/default/files/resource/files/project_logic_model_how_to_note_final_sep1.pdf)

<https://www.brighterstrategies.com/blog/the-logic-model-a-look-at-outcomes-and-indicators/>